



Classroom Management with Harry and Rosemary Wong

Information About the Premier eLearning Course

(Click on the active links in [red and underlined](#) to learn more.)

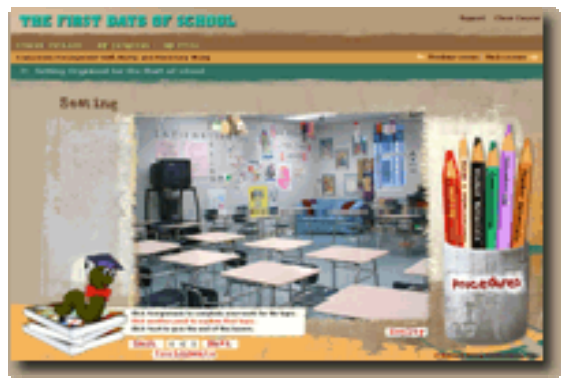
OVERVIEW

Harry and Rosemary Wong have developed an eLearning course on classroom management based on their book *The First Days of School*. This groundbreaking program is called *Classroom Management with Harry and Rosemary Wong*.

The purpose of the course is to teach the user how to structure and organize a classroom for maximum student learning time.

By the end of the course, the user will have created a binder containing his or her own personal Action Plan for classroom management.

Classroom Management with Harry and Rosemary Wong can be taken anytime, on demand, and anyplace, at school or at home. This is the most advanced and exciting eLearning course produced for educators. It is unlike and far beyond any eLearning or distance learning course on the Internet today. The graphics, style, and quality of the production are amazing. The lessons are rich with information. The pace is quick and engaging.



STRUCTURE OF THE COURSE

The course consists of six lessons and will take approximately 20 hours to complete in its entirety.

- Lesson 1 - A Plan for Classroom Management**
- Lesson 2 - What Is Classroom Management?**
- Lesson 3 - Getting Organized for the Start of School**
- Lesson 4 - How to Teach Procedures**
- Lesson 5 - School-Wide Procedures**
- Lesson 6 - Some Final Thoughts**

Each lesson features the following:

- **A set of objectives**
- Dozens of strategies used by teachers and schools for examples
- Structured assignment pages

Classroom Management has been demystified and broken down to its essential components:

- Its definition
- What it looks like and doesn't look like
- How to teach it
- How to plan for it
- How to get others to buy into it as well

HOW THE COURSE IS TAUGHT

Harry and Rosemary Wong lead the user and provide the instruction in the course. At the end of each lesson, the user is given Assignments as “homework” to reinforce the instructions. This eLearning course is designed to improve the quality of the teacher’s classroom management skill so he or she can maximize student learning time.

The course has three characteristics:

1. Interactive

- There is interaction with the content of the lesson as it is being presented.
- There are three different types of Assignments to complete at the end of each lesson.
 - 1.) **Reflections**—Thought provoking questions are posed for the learner that apply the objectives from the lesson and give deeper meaning to the content just experienced in the course.
 - 2.) **Readings**—Pages from *The First Days of School* are called out to reinforce the topics presented in the lesson. Additional **Resource Articles** are provided that show how practicing classroom teachers have adapted the topic to their particular situations.
 - 3.) **Binder Pages**—Over 70 topics are offered to help the user think through a plan for classroom management. Individual pages are provided to complete and put in the binder provided with the course.

2. Introspective

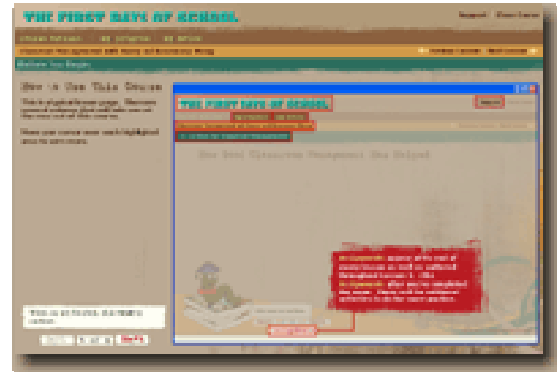
- Hundreds of strategies and practices are provided from which the learner can reflect and develop a plan suitable for his or her own classroom. This plan evolves into the **Classroom Management Action Plan Binder**, the product of this course.

3. Informative

- The goal is to produce effective teachers who will improve student learning. Harry and Rosemary share their expertise as well as the talents of other knowledgeable teachers.

Before the lessons formally begin, a **Welcome** segment sets the tone for the course. Here the user is walked through the features of the learning environment. This **Before You Begin** section acquaints the user with the multitude of features imbedded in the course.

At the end of each lesson the user will have **Assignments** to do. These can be completed with the help of the interactivity and the resource readings.



Throughout the course, reference is made to our book *The First Days of School*. Access to the book is necessary to complete the assignments in the course.

In conjunction with this course, participants are eligible to purchase *The First Days of School* at a substantial savings. Please see the order page for details.

REQUIREMENTS FOR THE COURSE

This course has been designed for distribution over the Internet to users with high speed access. A modem connection will not accommodate the media rich lessons.

It is both PC and Mac compatible and is configured to display with the following browsers and operating systems:

BROWSERS	OPERATING SYSTEMS
Internet Explorer 5.5 - 6.0 or above	Windows NT 4/98/98SE/ME/2000/XP
Internet Explorer 5.0 or above for Mac	Mac OS 9.0 and 10.0 or above
Netscape 6.2 and 7.2 or above	Windows NT 4/98/98SE/ME/2000/XP
Mozilla 1.5 and 1.6 or above	Linux (kernel 2.x)
Safari 1.0 or above	Mac OS 10.0 or above

Classroom Management with Harry and Rosemary Wong requires **Flash Player 7** or above and **Adobe Acrobat Reader 5** or above. Links are provided on the course site to download the most up-to-date versions of these free plug-ins.

This course is designed to be viewed at a minimum monitor resolution of **1024 x 768**. Instructions for changing this setting, if needed, are provided on the course site.

Access to the book, ***The First Days of School***, is needed to complete the course. Copies are available at substantial savings to enrollees of this course. See the order form for additional information about this special offer.

Access to the Enhanced CD or DVD, ***Never Cease to Learn***, is needed to complete the assignments in the course. The Enhanced CD comes free with the 3rd edition of ***The First Days of School***. The DVD is available from Harry K. Wong Publications. See the order form for details and pricing.

OUTCOME OF THE COURSE

This program is designed so the user will create a **Classroom Management Action Plan Binder**. An empty binder is sent to each person enrolled in the course. At the end of the course, the binder will be filled with pages of plans for organization and management and will become the learner's personal guide for success in the classroom.



RESEARCH BEHIND THE COURSE

The Classroom Management Action Plan techniques suggested by this course—

- can be applied at no cost,
- are non-controversial,
- have been used successfully by millions of teachers,
- are common-sense and practical, and
- result in a classroom managed for successful learning.

An *Educational Leadership* article, "What Helps Students Learn?" reviewed 50 years of research on student learning, encompassing 11,000 statistical findings. The authors identified 28 factors influencing learning and these were rank ordered.

The #1 factor governing student learning was classroom management.

(Wang, Haertl, & Walberg, 1993/1994, and *The First Days of School*, p. 82)

Teaching quality is the most critical factor by which to improve student achievement or close the achievement gap.

- Over 200 studies have shown that the only way to improve student achievement is with a knowledgeable and skillful teacher. (*What Matters Most*, 1996)
- The most effective teachers produce as much as six times the learning gains as the least effective teachers. (Wyatt, 1998)
- Students who have several effective teachers in a row make dramatic achievement gains, while those who have even two ineffective teachers in a row lose significant ground. (Sack, 1999)
- The difference in teachers' effectiveness is the single largest factor affecting academic growth of populations of students. (Sanders, 2000)

- A student who is taught by an ineffective teacher for two years in a row can never recover the learning lost during those years. (Sanders, 2000)
- As a teacher's effectiveness increases, the first group to benefit from this improvement is the lower achieving students. (Sanders, 1996)
- The achievement gap facing poor and minority students is due not to poverty or family conditions, but to systematic differences in teacher quality.

Therefore, quality teaching is the most critical means by which to improve student learning and to close achievement gaps.

This eLearning course is designed to improve the quality of the teacher's classroom management skill so he or she can maximize student learning time.

HOW TO ORDER

The basic course, ***Classroom Management with Harry and Rosemary***, comes with a binder and 60 day access. The course is also available bundled with other items needed to complete the course. These items are packaged as described below.

	Basic Course, Binder 60 Day Access	Book, <i>The First Days of School</i>	Printing Packet, 302 pages of printed resources from course	Pricing in US\$ 1 — 4 Users
Course Only	✓			\$89.95
Bundle 1	✓	✓		\$104.95
Bundle 2	✓		✓	\$109.95
Bundle 3	✓	✓	✓	\$124.95

Quantity Pricing for *Classroom Management with Harry and Rosemary Wong*

Item	Cost per User 1 – 4	Cost per User 5 – 49	Cost per User 50 – 99	Cost per User 100+
Course Only	\$89.95	\$80.96	\$ 71.96	\$ 62.97
Bundle 1	\$104.95	\$94.46	\$83.96	\$73.47
Bundle 2	\$109.95	\$98.96	\$87.96	\$76.97
Bundle 3	\$124.95	\$112.46	\$99.96	\$87.47

Upon order confirmation, users will be emailed a User ID and Password for taking the course. The binder and any additional course materials ordered in the bundles will be shipped separately.

Each User ID and Password purchased is for one user only.

Each user will have 60 days to complete the course.

Extra days beyond 60 are available at an additional cost. Contact Harry K. Wong Publications for details and pricing.

[Click here to be redirected to the Order Form.](#) Or when you're done, return to the home page of this site and click the **Order eLearning Course** button. You will be directed to an order form for this course and products related to the course.

PREVIEW POLICY

If you are a Staff Developer, Trainer, College Professor, or any professional working with large groups of teachers and are considering a purchase of 10 or more users, we can offer you full access to examine the course for 72 hours. Please call Emily Laidlaw at 650-965-7896 to arrange a time to preview the course.

CONTACT INFORMATION

For questions or comments about this course, please email us at [**eSupport@harrywong.com**](mailto:eSupport@harrywong.com).

Harry K. Wong Publications, Inc.
943 North Shoreline Boulevard
Mountain View, CA 94043
TEL 650-965-7896 **FAX** 650-965-7890

www.ClassroomManagement.com